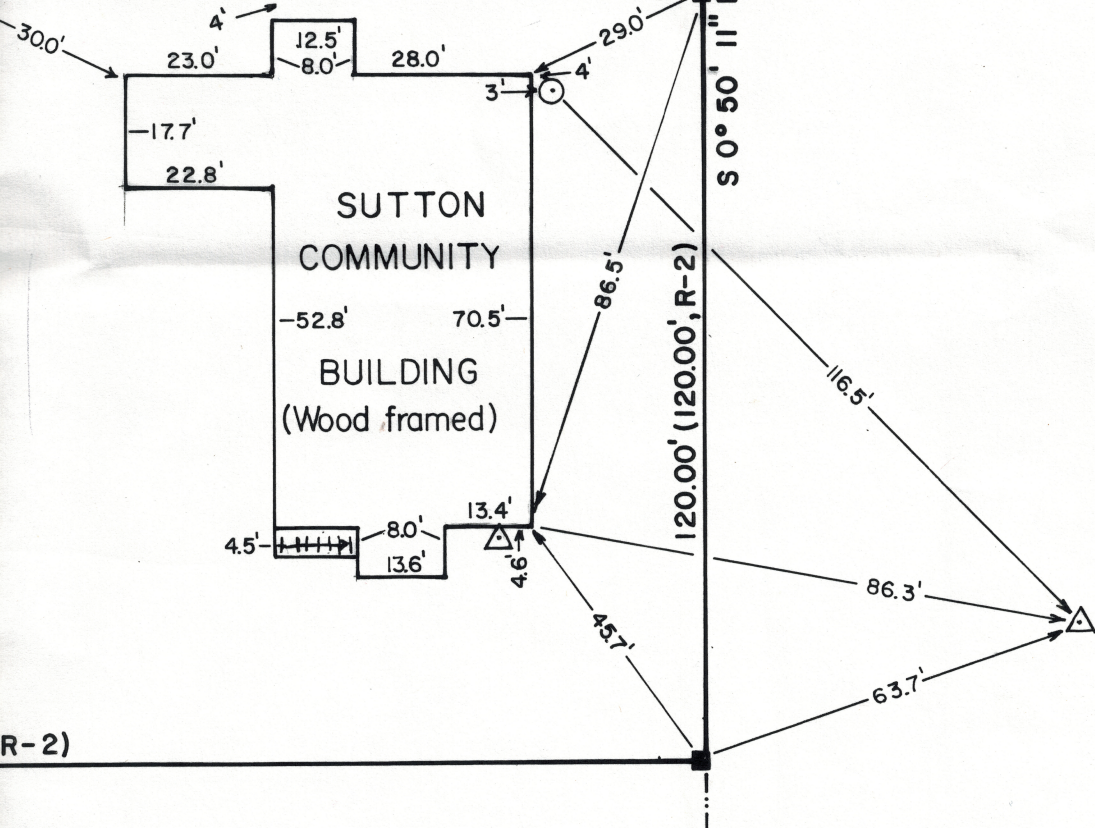
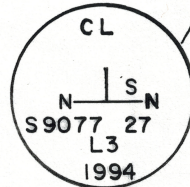
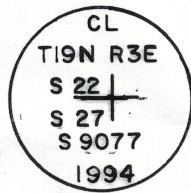
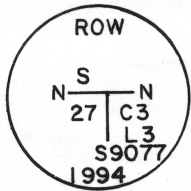


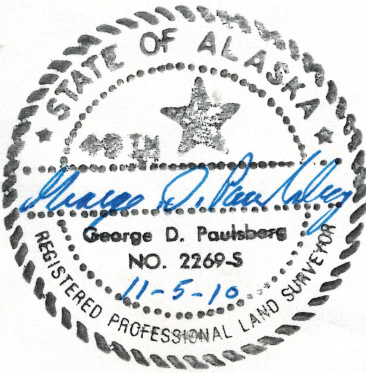
SET NAIL

189°07'27"E 116.54' (EAST 107.58', R-2)

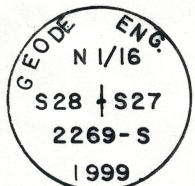
R-2)



SUTTON BRANCH-RAIL ROAD



RECORD OF SURVEY - AS-BUILT		
QUITCLAIM DEED # 2009-015048 - 0		
SCALE: 1" = 30'	PALMER RECORDING DISTRICT	DRAWN BY
DATE: NOV. 2010		GEORGE PAULSBERG
ENGINEERING & SURVEYING SERVICES P. O. BOX 870215 WASILLA, ALASKA 99687		
		DRAWING NUMBER
		ESS 210 - 08A



N 89° 07' 27" E 1846.87' (N 89° 55' W 1847.14, R-1)

1320.42'

(1320.50', R-1)

(1320.38', R-3)

310.00' (EAST 310.00', R-2)

S 0° 50' 11" E 30.00' (SOUTH 30.00', R-2)

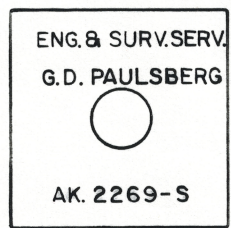
POINT DISTURBED
(OK IN DISTANCE)
(OFF ON LINE)

N 1/16 SEC. S 27/28

NW 1/16 SEC. 27

BASIS OF BEARING

THE BASIS OF BEARING ON THIS SURVEY WAS DETERMINED BY A HIGH PRECISION GPS SURVEY USING SOKKIA GSR 2700 ISX RECEIVERS DIFFERENTIALLY CORRECTED AND PROCESSED USING CARLSON SURV CE-2 VERSION 2.04 3/20/08.



TYPICAL MON.

N 47° 49' 00" E 181.79' (N 47° 49' E 178.70', R-2)

S 89° 07' 27" W 253.01' (WEST 240)

LEGEND

- ⊕ FOUND 2" AL. CAP ON #5 RE-BAR
- FOUND #5 RE-BAR
- ⊙ WELL
- ⊗ FOUND B.L.M. BRASS CAP MON. ON 2 1/2" PIPE
- △ SEPTIC ACCESS PIPE
- SET 5/8" x 30" RE-BAR w/ 2 1/4" SQUARE PLASTIC CAP

R-1 RECORD - U.S. SURVEY # 9077, ALASKA
 R-2 RECORD - QUITCLAIM DEED # 2009-01504048-0
 R-3 RECORD - PLAT # 2000-31